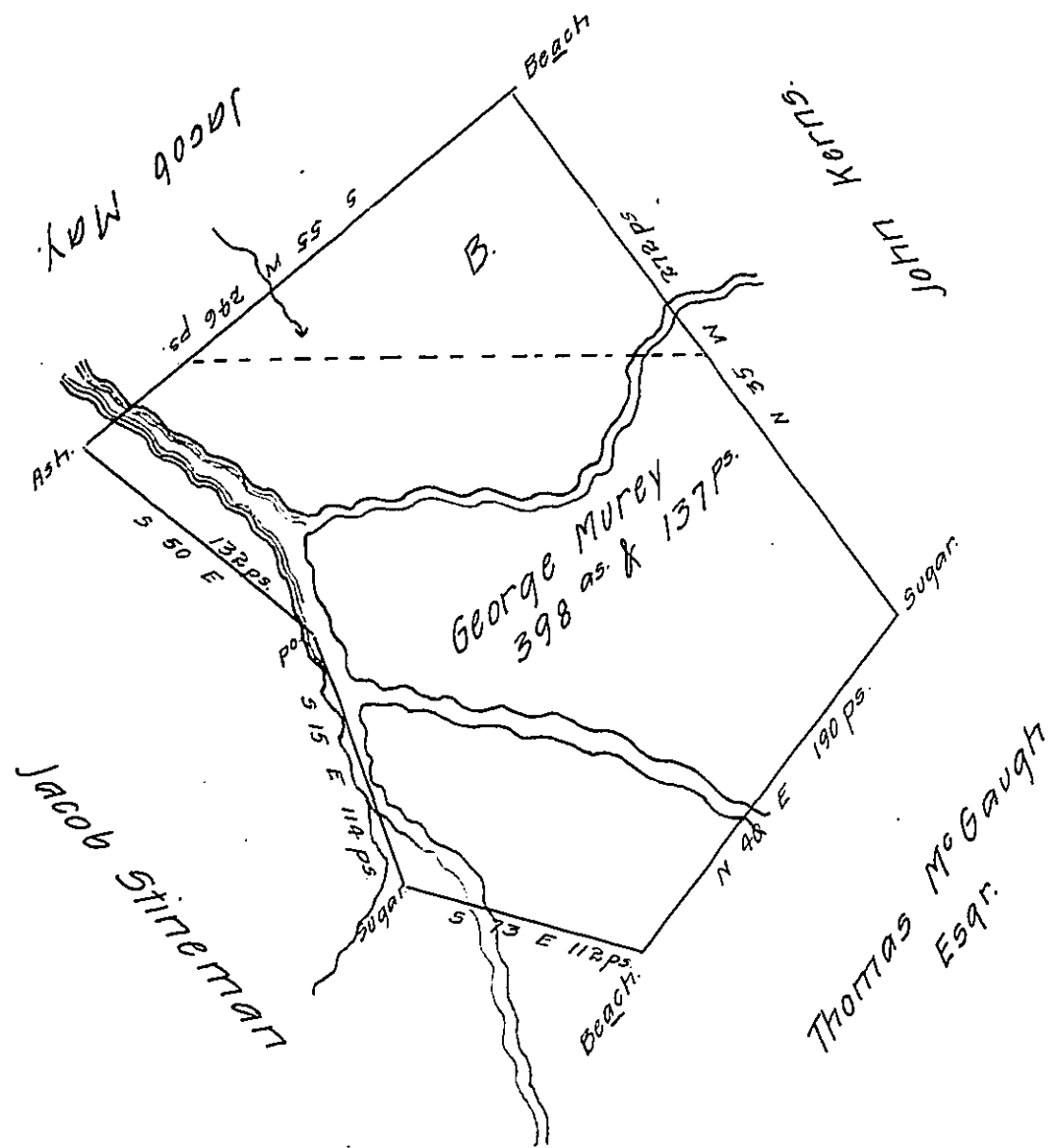


FORM No 1.



A draft of a tract of land called the risairoy situate on the waters of Gonermaugh river containing three hundred and ninety eight acres & one hundred and thirty seven perches with the allowance of six percent for roads &c. surveyed in pursuance of a warrant granted to George Murry dated the 28th day of August A.D. 1839 in Summerhill township in the county of Cambria the part marked B. on the diagram with the dotted lines is claimed by Isaac Plumer it contains ninety six acres & one hundred & twenty nine perches with allowance of six percent the above land has been surveyed by me. September 16th 1839.

James Magee Esq. D.S.

To Jacob Gallade Esq. Surveyor General } of Cambria County.
of the state of Pennsylvania.

N.B. The above land includes an improvement made the first of March A.D. 1831. J. Magee Esq. D.S.

IN TESTIMONY that the above is a copy of the original remaining on file in the Department of Internal Affairs of Pennsylvania, made conformably to an Act of Assembly approved the 16th day of February, 1833, I have hereunto set my Hand and caused the Seal of said Department to be affixed at Harrisburg, this nineteenth day of June 1908.

Henry Horvath
Secretary of Internal Affairs.